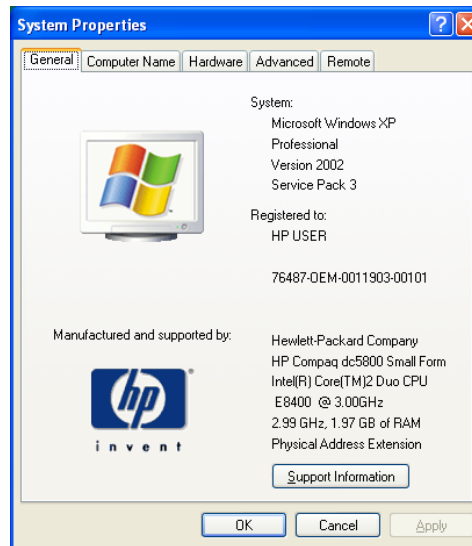
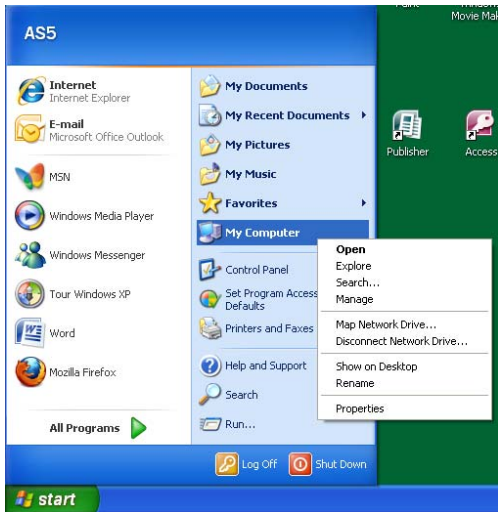
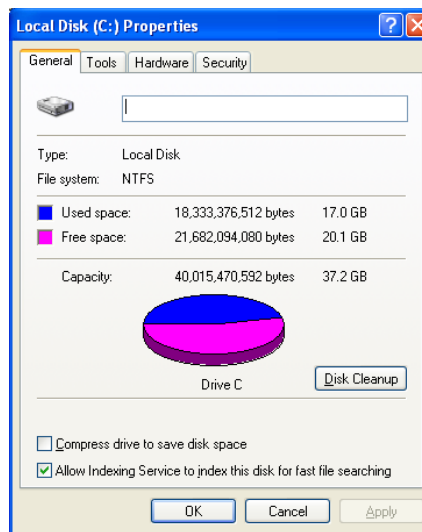
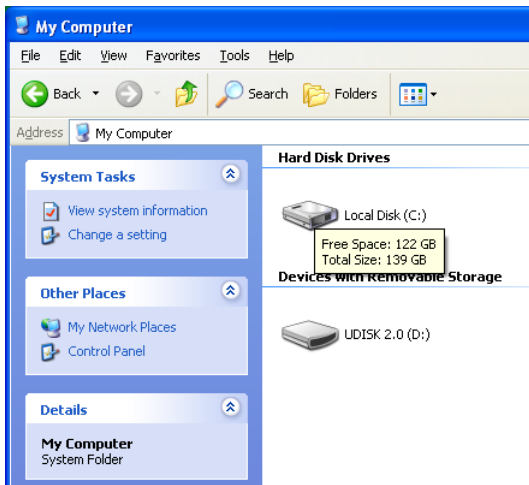


Checking System Requirements for Media Center

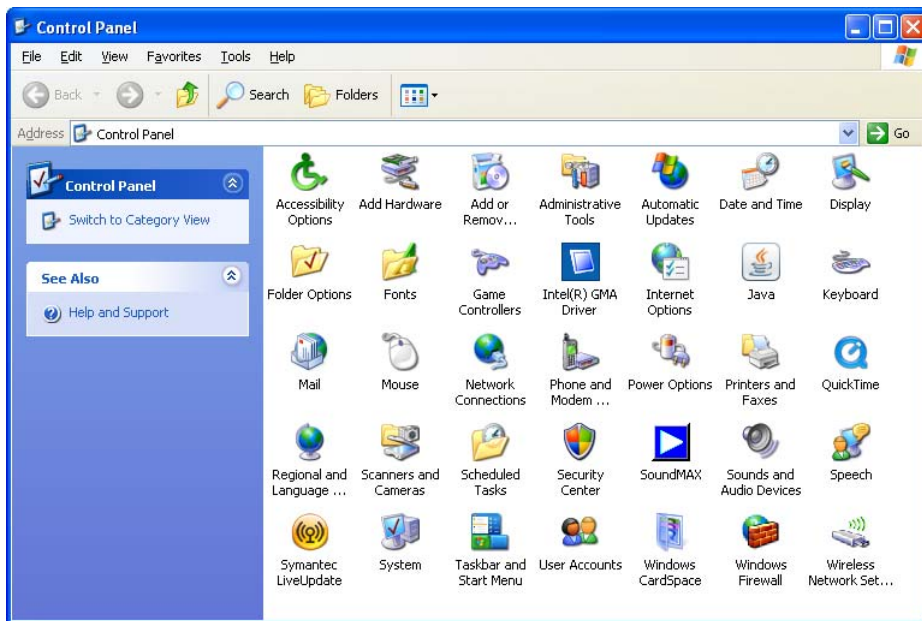
Click the **Start Button**, then *right-click* **My Computer** to display the pop-up menu. Select **Properties** to review the Windows version (Vista Service Pack 1 or XP Service Pack 2 or higher), processor speed (233MHz required; 1.5GHz recommended) and system memory (128 MB required; 512 MB recommended). Click **OK** when done.



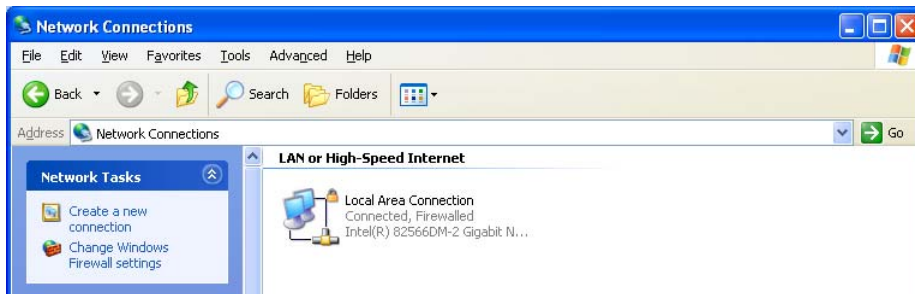
Click the **Start Button**; then click **My Computer** to display the hard drive details. Place the mouse cursor over the **Local Disk (C:)** to display its statistics. If they do not pop up, *right-click* Local Disk (C:), then select **Properties**. Confirm the available space is a *minimum* of 500 MB (60 GB recommended). Close the Local Disk Properties and/or the My Computer window when done.



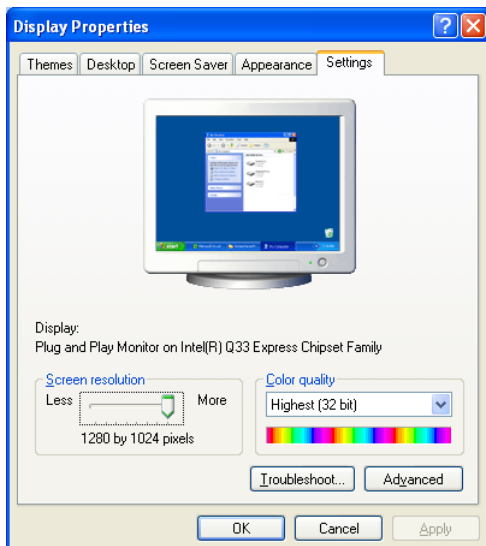
Click the **Start Button**, then select **Control Panel** from the menu.



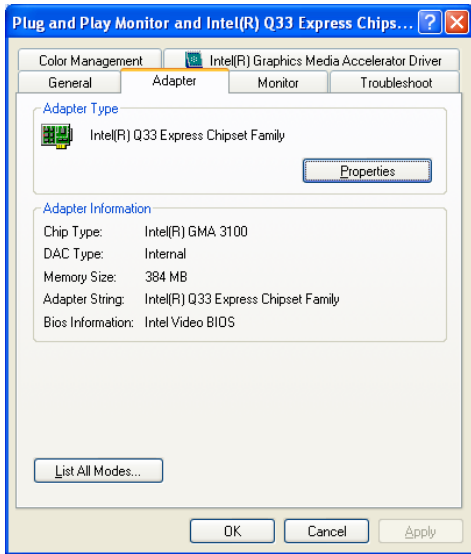
Double-click the **Network Connections** icon to confirm the type and speed of your internet connection. Close the window when done.



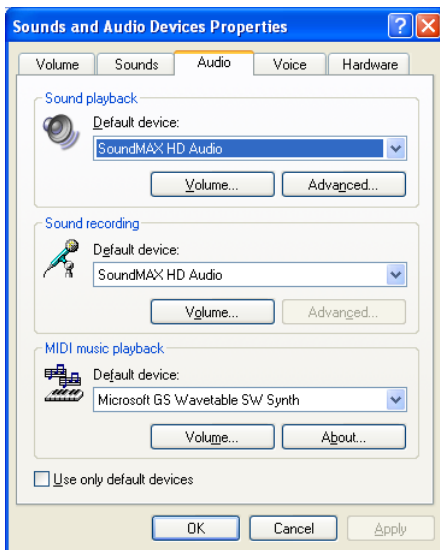
In the Control Panel, *double-click* the **Display** icon to view the Display Properties. Select the **Settings** tab to confirm the screen resolution is at least 1024 by 768.



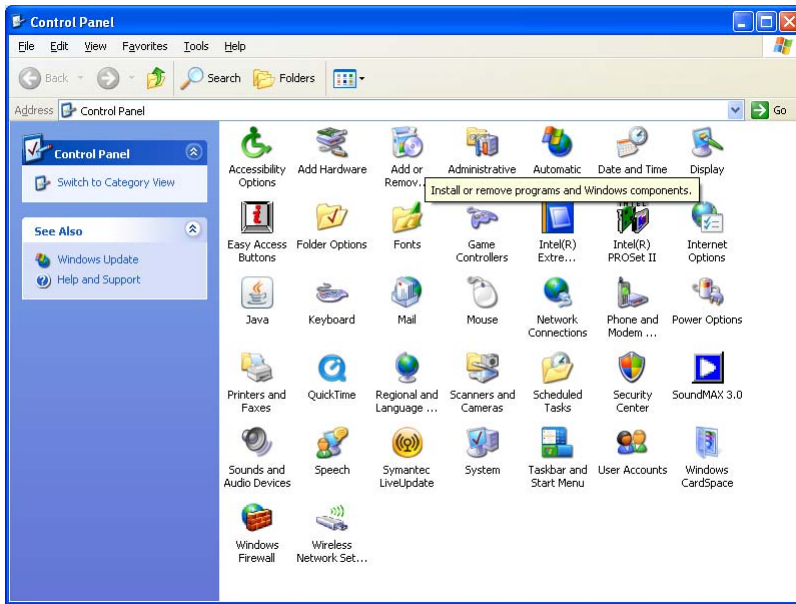
Click the **Advanced** button. Select the **Adapter** tab to confirm the video memory is at least 64MB. Close the window when done.



In the Control Panel, *double-click* the **Sounds and Audio Devices** icon to confirm the presence of a sound card. Close the window when done.



In the Control Panel, *double-click* the **Add or Remove Programs** icon.



Scroll through the list of currently installed programs. Check for **Microsoft .NET Framework 2.0** and **Windows Media Player 11**. Both must be installed *before* the Media Center software can be installed.

